

SUPPLEMENTARY MATERIALS

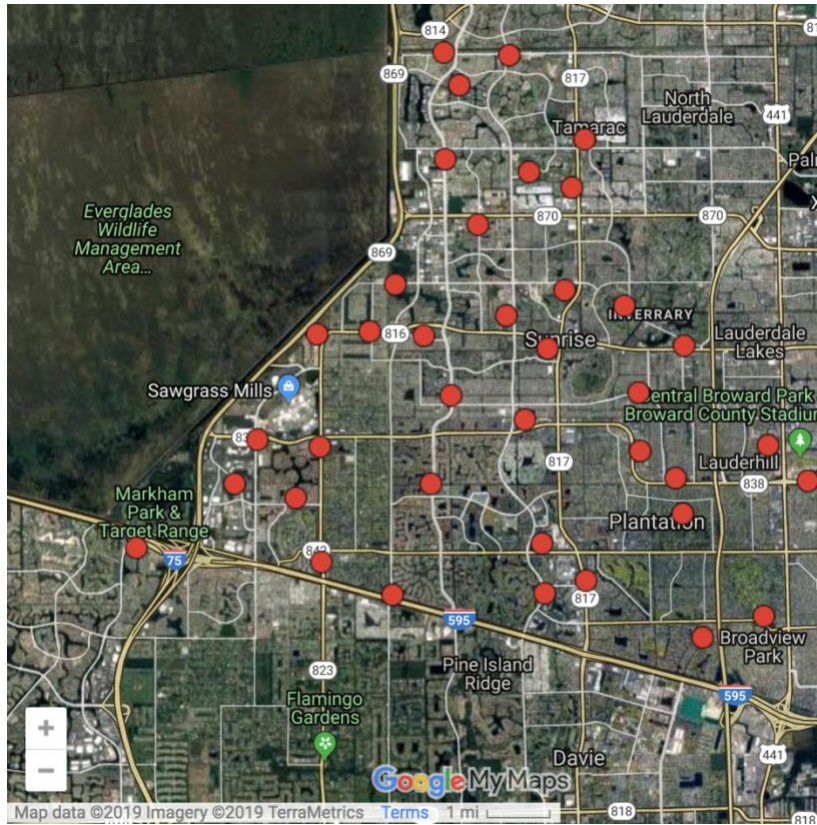


Figure S1 Sites used in the body size variation study in southwest Broward County, Florida (Google Maps, 2019).

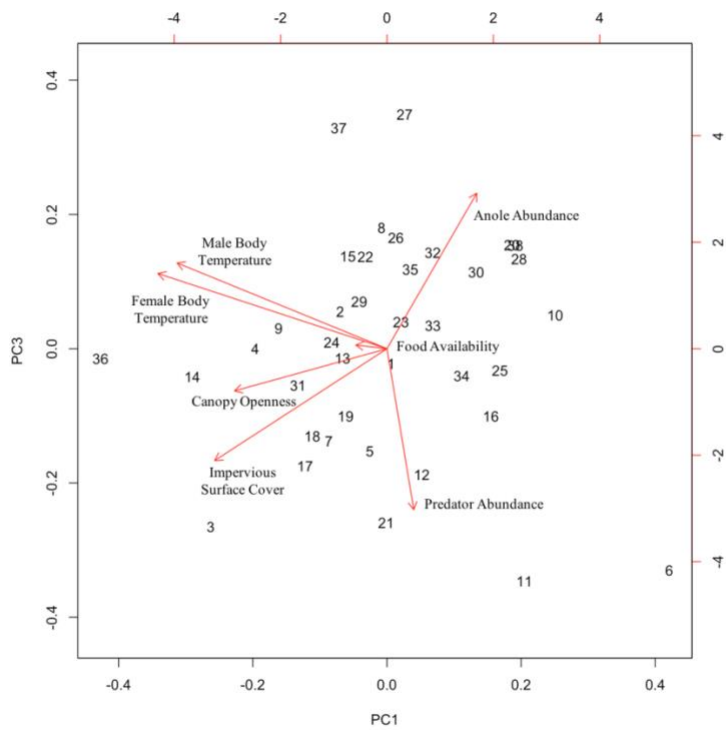
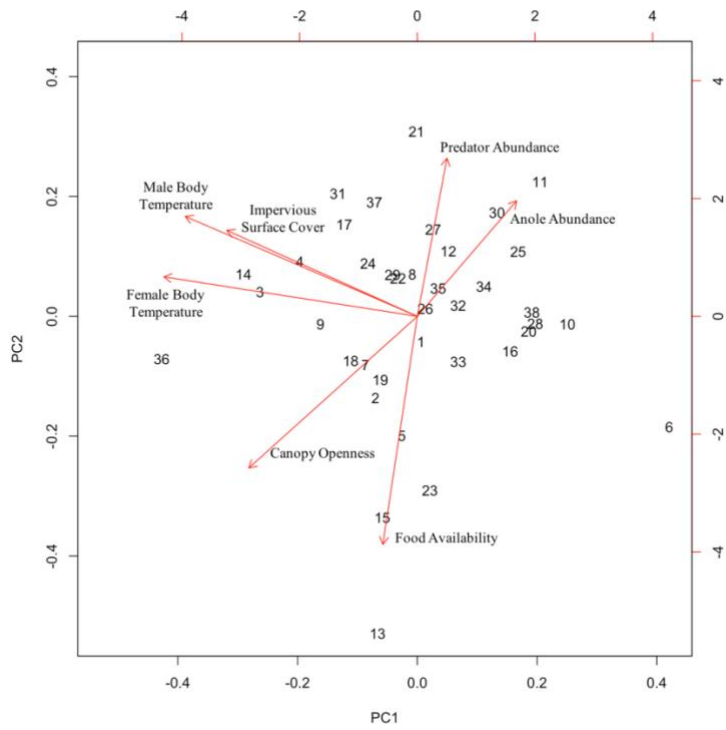


Figure S2 Visualization of principal component axes 1-3 for the abiotic and biotic variables hypothesized to influence brown anole body size. Numbers (1-38) indicate the study sites.

Table S1 Loadings from the principal component analysis of the abiotic and biotic variables hypothesized to influence brown anole body size including eigenvalues and proportion of variance explained for each principal component. Additional principal component axes (i.e., PC 4-7) from this analysis had eigenvalues less than one.

	PC1	PC2	PC3
Male Body Temperature	-0.526	0.275	0.308
Female Body Temperature	-0.574	0.109	0.270
Impervious Surface Cover	-0.432	0.237	-0.402
Canopy Openness	-0.382	-0.417	-0.152
Food Availability	-0.078	-0.627	0.013
Brown Anole Abundance	0.225	0.318	0.559
Curly-tailed Lizard Abundance	0.067	0.434	-0.579
Variance Explained	0.331	0.224	0.160
Eigenvalue	1.521	1.253	1.060

Table S2 Results of the linear mixed effect models for male and female body size using square-transformed SVL values. Site was included as a random effect.

Variable	Value	Std. Error	DF	T-Statistic	P
Males					
Intercept	2128.322	432.761	349.302	4.918	0
Body Temperature	32.379	12.521	571.173	2.586	0.010
Time of Day	1.019	9.426	585.965	0.108	0.914
Canopy Openness	0.878	8.223	31.532	0.107	0.916
Impervious Surface Cover	-269.192	313.150	31.846	-0.860	0.396
<i>A. sagrei</i> Abundance	1.451	27.020	32.000	0.054	0.958
<i>L. carinatus</i> Abundance	374.080	161.799	31.115	2.312	0.028
Food Availability	2369.531	3999.150	30.647	0.593	0.558
Females					
Intercept	2115.269	195.149	333.082	10.839	0
Body Temperature	-2.847	5.448	582.154	-0.523	0.602
Time of Day	-4.084	3.954	577.589	-1.033	0.302
Canopy Openness	-5.258	3.964	31.418	-1.326	0.194
Impervious Surface Cover	-11.582	152.273	32.793	-0.076	0.940
<i>A. sagrei</i> Abundance	12.116	13.034	31.975	0.930	0.360
<i>L. carinatus</i> Abundance	168.173	78.306	31.483	2.148	0.040
Food Availability	3200.388	1940.093	31.316	1.650	0.109

Table S3 Results of the linear mixed effect models for male and female body size using non-transformed SVL values. Site was included as a random effect.

1

Variable	Value	Std. Error	DF	T-Statistic	P
Males					
Intercept	46.445	3.966	348.839	11.710	0
Body Temperature	0.300	0.115	571.627	2.616	0.009
Time of Day	0.017	0.086	585.884	0.194	0.846
Canopy Openness	0.008	0.076	31.549	0.105	0.917
Impervious Surface Cover	-2.442	2.876	31.862	-0.849	0.402
<i>A. sagrei</i> Abundance	-0.016	0.248	32.015	-0.063	0.950
<i>L. carinatus</i> Abundance	3.418	1.486	31.134	2.300	0.028
Food Availability	21.278	36.735	30.669	0.579	0.567
Females					
Intercept	46.131	2.225	334.064	20.731	0
Body Temperature	-0.034	0.062	581.878	-0.554	0.580
Time of Day	-0.048	0.045	577.703	-1.060	0.290
Canopy Openness	=0.062	0.045	31.414	-1.366	0.182
Impervious Surface Cover	-0.169	1.732	32.798	-0.098	0.921
<i>A. sagrei</i> Abundance	0.123	0.148	31.975	0.827	0.414
<i>L. carinatus</i> Abundance	1.906	0.890	31.479	2.140	0.040
Food Availability	37.195	22.060	31.312	1.686	0.102